


WWTECH Sevices

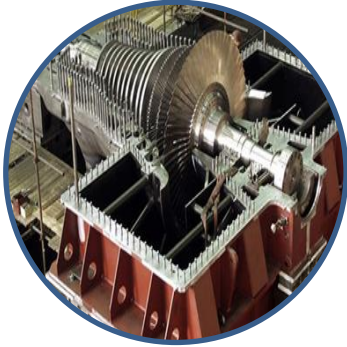
On-Site Machining Services | 3D Measurement Systems



		Przedsiębiorstwo Mechaniczno - Inżynieryjne WWTECH Przemysław Wójcik		
WWW:	wwtech.com.pl	Tel.	+48 662 293 646	Adres: ul. Brzozowa 5 26-085 Miedziana Góra
E-mail:	office@wwtech.com.pl	Tel.	+48 608 701 702	
NIP:	959-175-91-92	Fax	+48 41 34 63 197	
All rights reserved. Reproduction, use or enclosure to third parties without express written authority is strictly prohibited © WWTECH 2019				

- Over 15 years of experience;
- 20 specialists;
- Tools designer, backoffice, test station;
- Dozens our own portable machines;
- Fast access to next dozens if needed;
- Stationary workshop;
- Emergency tools&spares production;
- ISO 9001:2015;
- ISO45001 coming soon;
- Trading flexibility;
- Worldwide mobility;





Thermal Power



Hydro



Shipbuliding



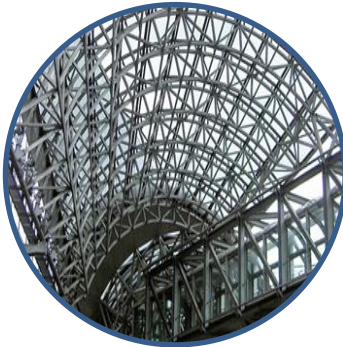
Wind



Offshore



Steel



Strucures



Oil&Gas



Rail



Civil



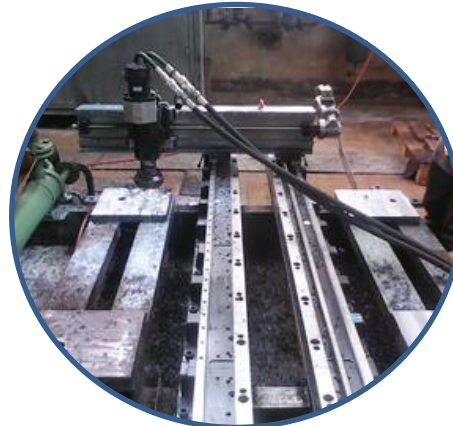
**3D laser measurement
& laser adjustment**



Machining & line boring



Welding & layering



Milling & grinding



Pipe cutting & beveling



Big size machining



**Stationary CNC centers,
RE spares**



**Drilling, threads, therad
callibration & repair**



Classic approach to overhaul:

- Dissassembly.
- Preparation for transport.
- Transport items to the Service Workshop.
- Waiting for production slot
- Treatments in the Service Workshop.
- Transport to assembly place.
- Small parts to be ordered in advance. Usually overestimated amount.
- Assembly.
- Machining corrections – repeat all above.

Benefits:

- Shorten repair time due to the reduction of logistic operations.
- Lowering the costs of multiple transport.
- Higher flexibility/possibility to change the priorities of machining resulting from changes in the schedule/assembly technology.
- Element adjusting in place – less errors.

Overhaul with mobile machining:

- Dissassembly.
- Machining on Site
- Small parts made on site as needed (mobile spares factory in container)
- Usage of specialized equipment.
- Assembly.
- Machining corrections on the spot.

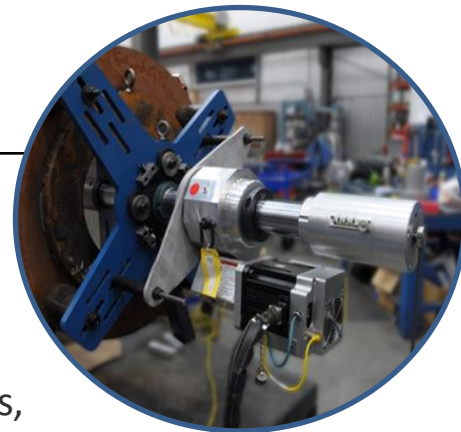
Conditions:

- Qualified, experienced Staff
- Flexibility, creativeness
- Technology
- Mobile equipment resource

Lossless cutting and beveling

- Pipes and steam chambers.
- Pipelines in order to remove the damage weldings
- Pipelines during dissassembly works





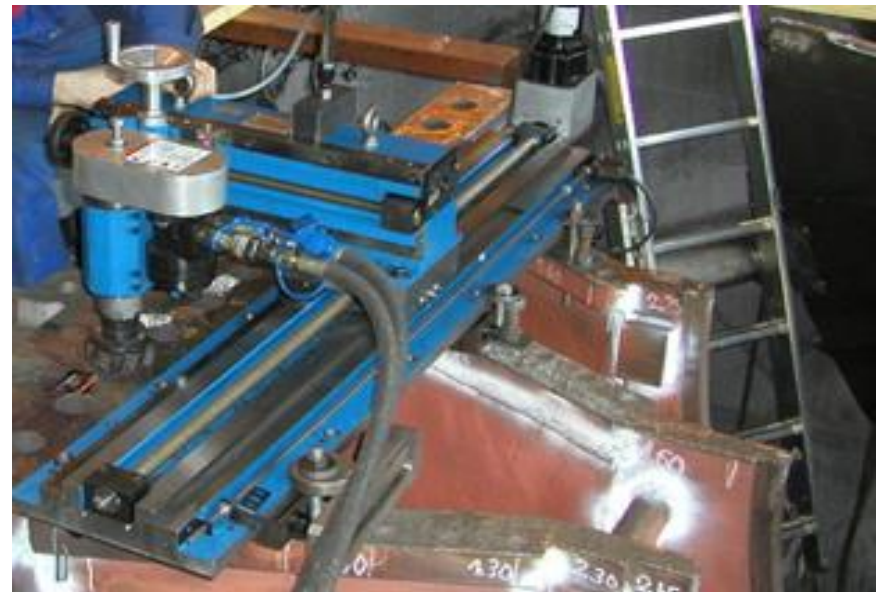
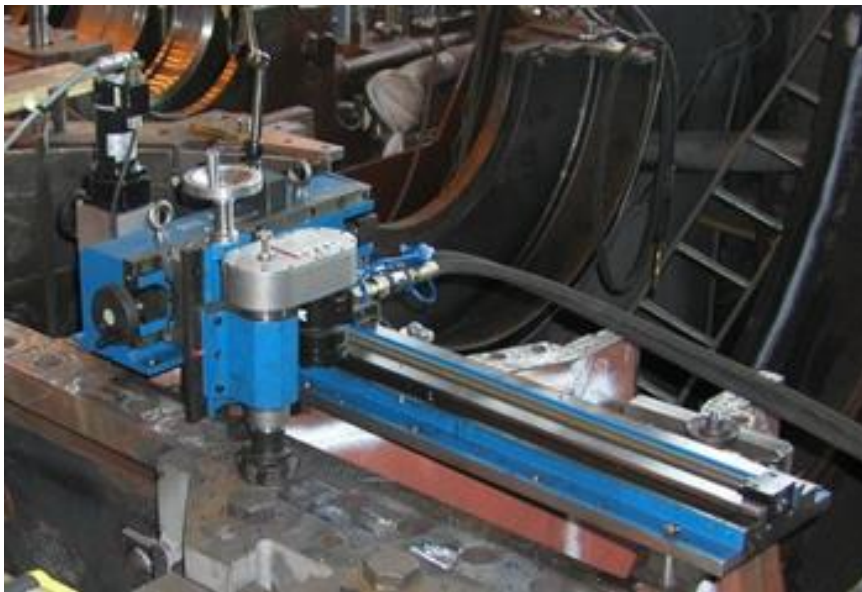
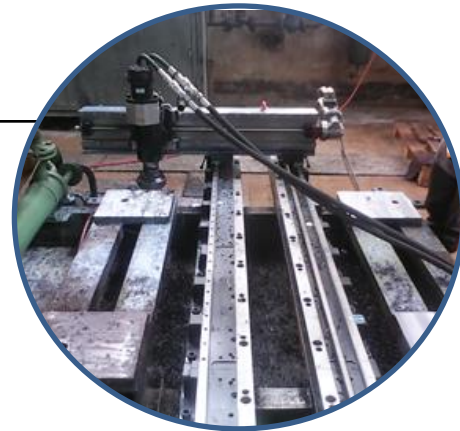
Flange facer

Boring bar

- Boring cylindrical holes and facing surfaces in:
 - Turbine casings, pedestals, bearing seats
 - Steam chests, valves
 - Flanges
 - Pipes
 - Couplings
- Surfaces machining with shape tools.



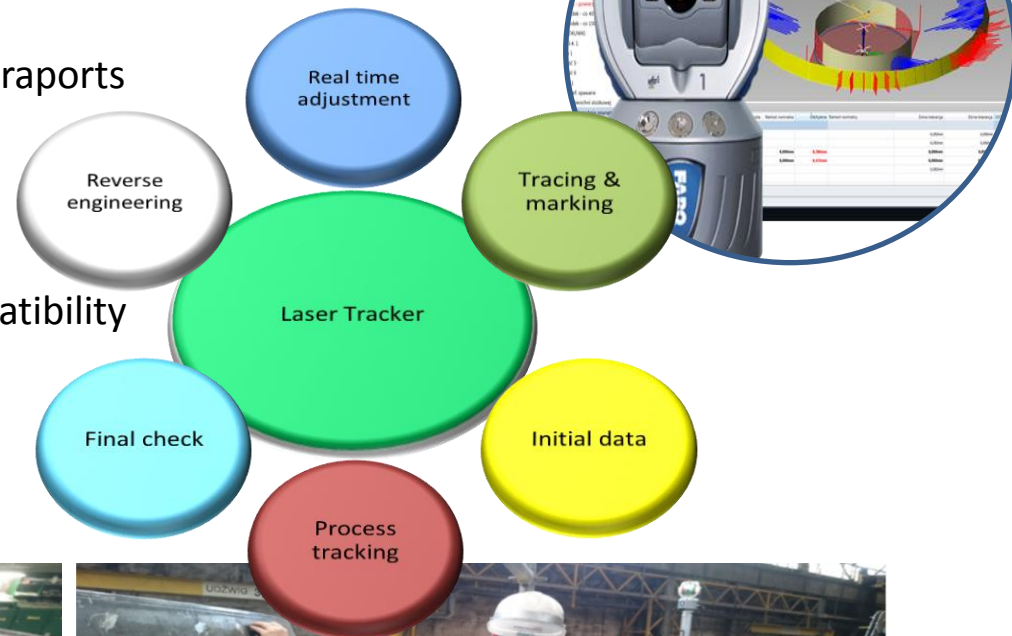
- Split planes, casings, covers
- Split plane sealing grooves
- Foundation plates
- Pocket glands
- Oval holes milling
- Grooves on cylindrical surfaces



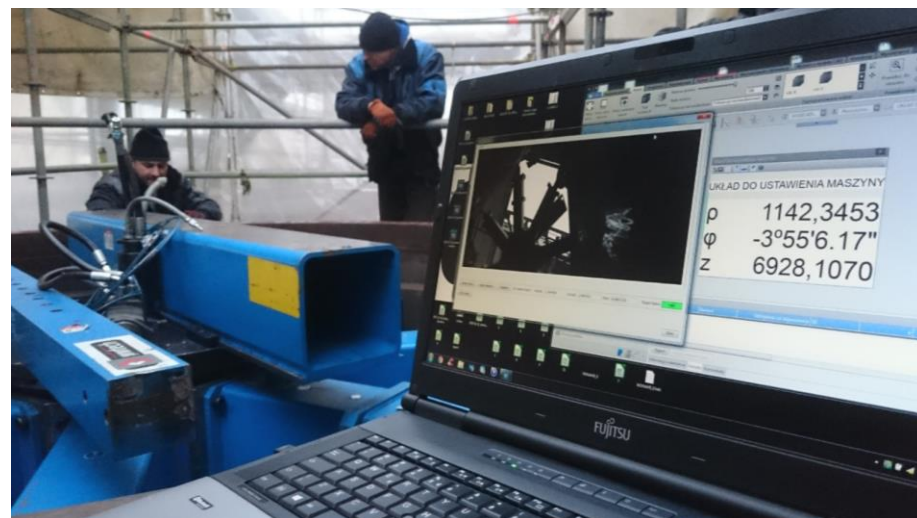
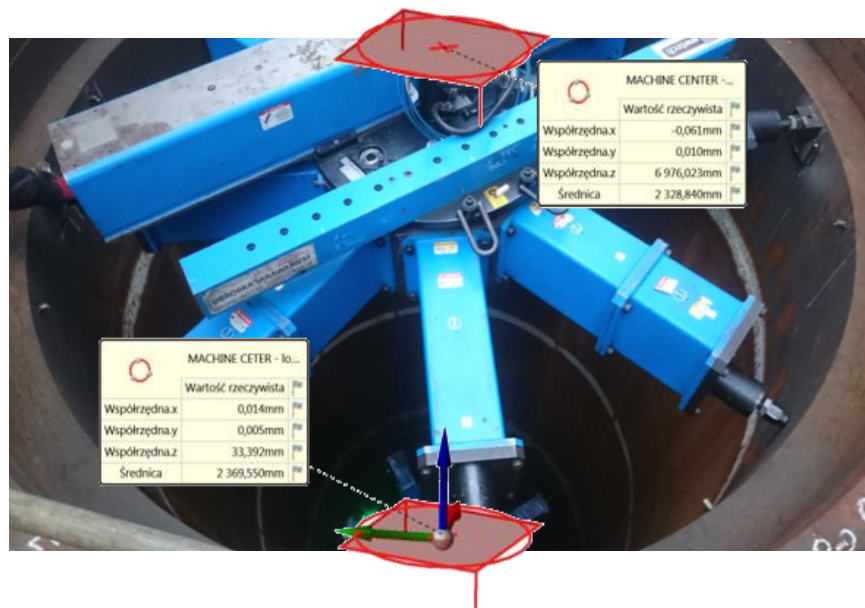
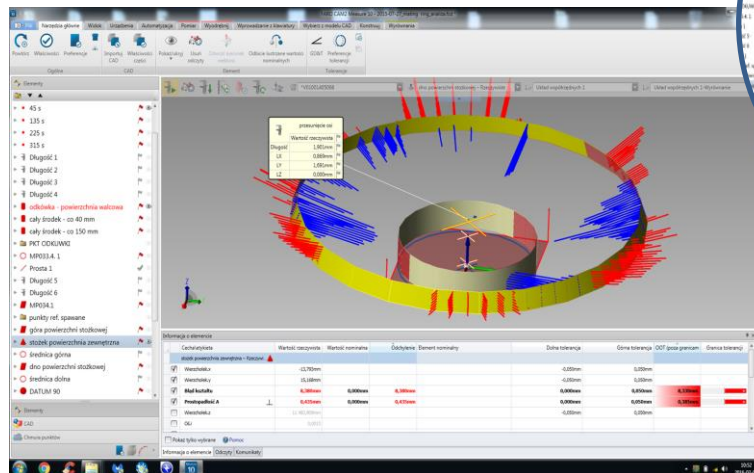
- All possible holes, threads
- Cylindrical and conical
- Restoration and calibration of existing threads
- Patented technology of broken bolts removal
- Pairing/honing coupling's holes



- Full measurement recording, measurement reports
- Dynamic measurement according to the common axis or in coordinate system
- Precision and quickness
- CAD geometry analysis, CAD software compatibility
- Real time computing
- Resistance to adverse external factors (dust, humidity)



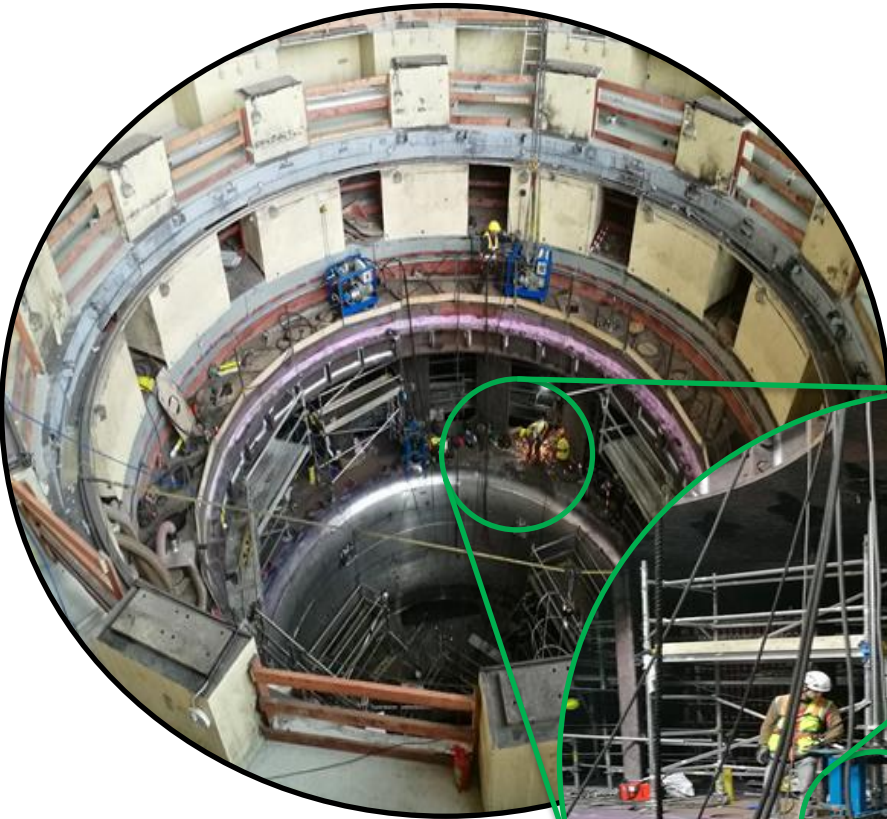
- Allowances or deviations: visualisation
- CAD principles – compatibility with most CAD software
- Application for centering
- Real time computing



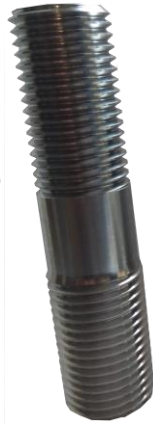
- Faces, flanges, cylindrical and conical surfaces
- Machning & milling diameter 300 – 8500 mm
- A size 15000 mm is being developed



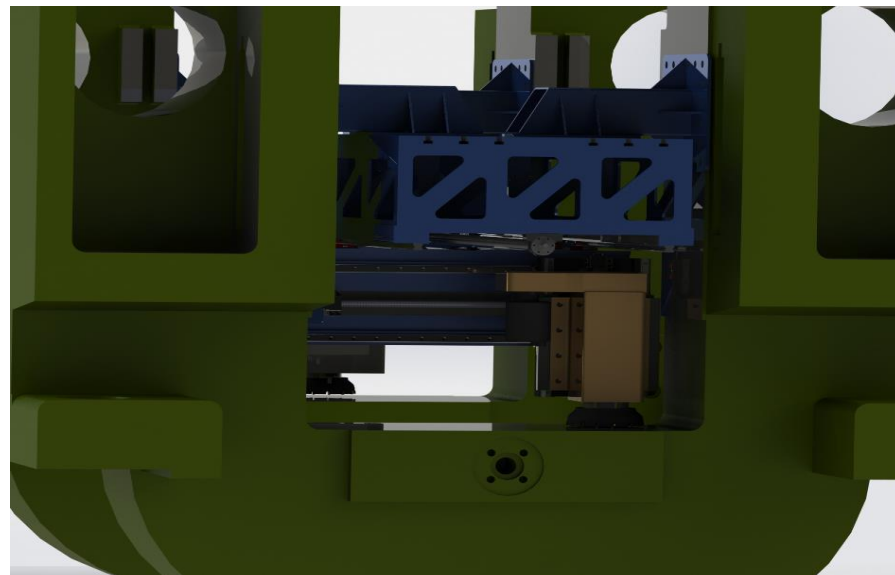
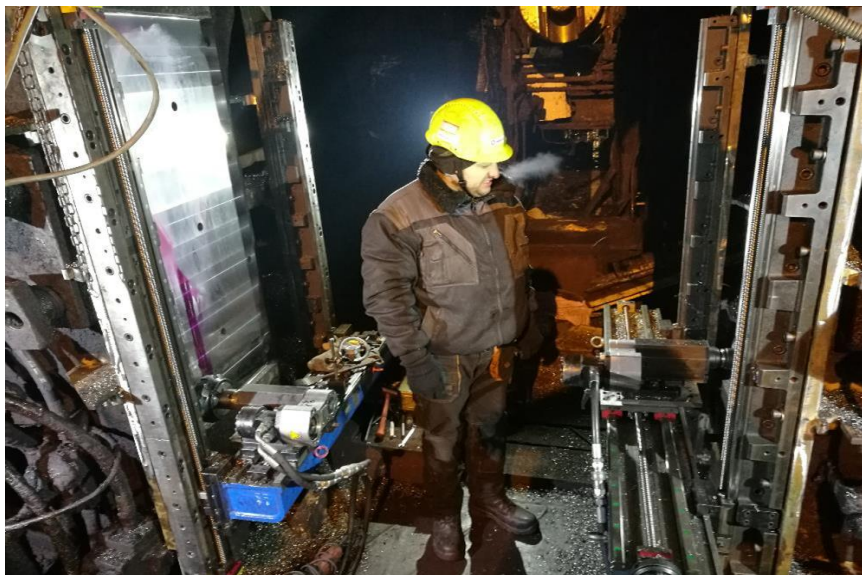
- Machining of outer conical surfaces – special dedicated machine
- Diameter about 7600mm;
- Coaxial machining of internal surfaces; basing on outer conical surface
- Diameters about 3000mm;
- Distance between surfaces 7130mm (vertical)



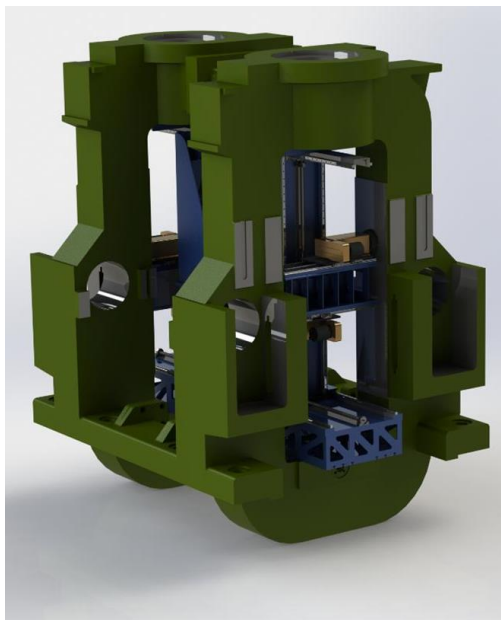
- Bolts, nuts, small parts
- Reverse engineered parts
- High alloy steel and carbon steel, aluminum, brass, bronze etc.
- Fast delivery, emergency mode
- Stock of popular materials



- Mill housing – online machining: restoration of geometry of internal surfaces of housings
- Two special dedicated machines designed and built especially for mill stands
- Very short maintenance window



- Mill housing – online machining: restoration of geometry of internal surfaces of housings
- Two special dedicated machines designed and built especially for mill stands
- Very short maintenance window



WWTECH will adhere to safe work practices and guard against hazardous and unsafe working conditions and will comply with the safety rules and regulations applicable. WWTECH's employees will use shoes, helmets, hand gloves, safety belts, safety goggles and all other safety appliances while working on Site. WWTECH will undertake full responsibility for safe execution of the Work on Site and safety of its personnel from the time they enter the gates of the Buyer's Works till the time they leaves.



WWTECH is going to introduce soon a new standard of safety management system ISO 45001



MANAGEMENT SYSTEM CERTIFICATE

Certificate No:	Initial certification date:	Valid:
258935-2018-AQ-POL-RvA	13 September 2018	13 September 2018 - 13 September 2021

This is to certify that the management system of

**Przedsiębiorstwo
Mechaniczno-Inżynieryjne
"WWTECH" Przemysław Wójcik**

ul. Brzozowa 5, 26-085 Miedziana Góra, Poland
and the sites as mentioned in the appendix accompanying this certificate

has been found to conform to the Quality Management System standard:

ISO 9001:2015

This certificate is valid for the following scope:

Providing on-site machining for machine parts and constructions for industry and individual customers.

Place and date:
Gdynia, 14 September 2018



The EYA is a signatory to the IAI (ILA)

For the issuing office:
DNV GL – Business Assurance
ul. Łużycka 6e, 81-537 Gdynia, Poland

Tomasz Słupski
Management Representative

Lack of fulfilment of conditions as set out in the Certification Agreement may render this Certificate invalid.
ACCREDITED UNIT: DMV GL Business Assurance B.V., ZWOEREG 1, 2004 LB, RAAMSBOSCH, NETHERLANDS, TEL: +31102923569, assurance.dmvgl.com



Polski Rejestr Statków

APPROVAL CERTIFICATE
ŚWIADECTWO UZNANIA

This is to certify that the
Zaświadcza się, że

Przedsiębiorstwo Mechaniczno-Inżynieryjne „WWTECH”
Przemysław Wójcik
ul. Brzozowa 5
26-085 Miedziana Góra

is approved within the scope
uznana w zakresie

Mobile machining services for machine parts and structures, for industry and individual consumers.

Usługi mobilnej obróbki skrawaniem części maszyn i konstrukcji, dla przemysłu i odbiorców indywidualnych.



Certificate No. **DP/972/891003/18**

C/682/03

Expiry date Data ważności	2021-12-14
------------------------------	------------

Issued at Wydanów

Gdańsk, 2018-12-20

J. Dilling
Signature/Postals

Polski Rejestr Statków S.A.
al. Gen. Józefa Hallera 128
80-416 Gdansk, Poland

Tel. +(48) 58 345 17 00
Fax +(48) 58 346 03 92

e-mail: mailto:mailbox@prs.pl
www: <http://www.prs.pl>

Continued overleaf/Ciąg dalszy na odwrócie

PRB/CJ 2008-03-01 ver. 2.0

112

wwtech.com.pl